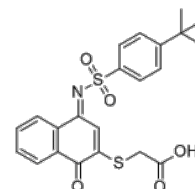


Product Name : KPT-6566
Cat. No. : PC-61182
CAS No. : 881487-77-0
Molecular Formula : C₂₂H₂₁NO₅S₂
Molecular Weight : 443.532
Target : Other Targets
Solubility : 10 mM in DMSO



Biological Activity

KPT-6566 (KPT6566) is a potent, specific and covalent inhibitor of the **prolyl isomerase PIN1** with K_i of 625.2 nM, IC₅₀ of 0.64 μM.

KPT-6566 displays no activity against other PPIases, including GFKBP4 and PPIA.

KPT-6566 covalently binds to the catalytic site of PIN1, decreases the expression levels of mut-p53 and NOTCH1 target genes, inhibits colony forming efficiency in MDA-MB-231 cells (IC₅₀=1.2 μM) through specific PIN1 inhibition.

KPT-6566 curbs self-renewal of breast cancer stem cells and promotes degradation of PIN1, elicits cellular responses to oxidative stress and induces DNA damage in a PIN1-dependent manner, induces cell death of cancer cells and reduces metastasis growth in vivo.

References

Campaner E, et al. *Nat Commun.* 2017 Jun 9;8:15772.

Caution: Product has not been fully validated for medical applications. Lab Use Only!

E-mail: tech@probechem.com